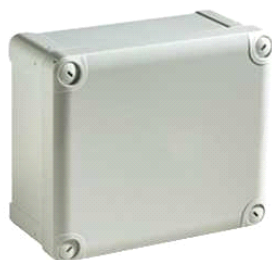


## NSYTBS1176

ABS box IP66 IK07 RAL7035 Int.H105W65D55  
Ext.H116W74D62 Opaque cover H10



### Main

Range of product	Thalassa TBS
Device application	Multi-purpose
Product or component type	Industrial box
Height	116 mm
Width	74 mm
Depth	62 mm
Internal height	105 mm
Internal width	65 mm
Internal depth	55 mm
Enclosure mounting	Wall mounted
Device composition	1 x body 1 x cover 4 x cover screw
Quantity per set	Set of 5
Body type	One piece moulded
Type of front cover	Low plain cover
Cover fixing	Metal screws
Lock type	Outside sealed area: flat screwdriver captive screw
Removable parts	Cover, by captive screws

### Complementary

Material	ABS
Colour	Grey ( RAL 7035 )
Standards	IEC 62208
Product certifications	DEMKO SEMKO TÜV
IP degree of protection	IP66conforming to NEMA 4.4X
IK degree of protection	IK07conforming to IEC 62262
Fire resistance	650 °C conforming to IEC 60695-2-11
Ambient air temperature for storage	-15...40 °C
Ambient air temperature for operation	-25...60 °C

### Environment

### Offer Sustainability

Sustainable offer status	Not Green Premium product
RoHS (date code: YYWW)	Compliant - since 0940 - Schneider Electric declaration of conformity
REACH	Reference not containing SVHC above the threshold
Product end of life instructions	Need no specific recycling operations

The information provided in this documentation contains general descriptions and/or technical characteristics of the products contained herein. This documentation is not intended as a substitute for and is not to be used for determining suitability or reliability of these products for specific user applications. It is the duty of any such user or integrator to perform the appropriate and complete risk analysis, evaluation and testing of the products with respect to the relevant specific application or use thereof. Neither Schneider Electric Industries SAS nor any of its affiliates or subsidiaries shall be responsible or liable for misuse of the information contained herein.